

## RAIN GUTTER PRODUCTS

# COLOR SELECTOR



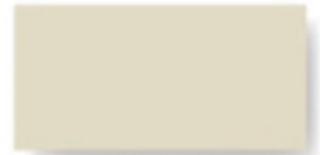
Low Gloss White\*



High Gloss White\*



Satin White\*



Almond\*



Classic Cream\*



Adobe Tan



Ivory\*



Heritage Cream\*



Peach



Pebblestone Clay\*



Woodbeige



Buckskin Brown\*



Beaver Brown\*



Bronze



Weathered Copper\*



Musket\*



Weathered Bronze



Royal Brown\*



Colonial Red\*



Black\*



Storm Gray\*



Old Town Gray\*



Colonial Gray\*



C.B. Blue



Tahoe Blue\*



Sea Blue



Marine Green\*



Spanish Green



Leaf Green\*



Forest Green\*



Zincalume<sup>®</sup> Plus



Copper

### NATURAL METALS

*Natural Metals are covered by a separate performance warranty. Please see our website for details.*

All colors are available in aluminum.  
Colors with (\*) are available in steel.

Colors shown here approximate finished colors as accurately as possible. However, colors may vary, and will also appear different on aluminum than they do on steel. Actual color samples on the appropriate metal choice are available upon request. Selection may vary by region. Please contact Custom-Bilt Metals for availability.

# SERVICE *partners* Gutter Supply, LLC

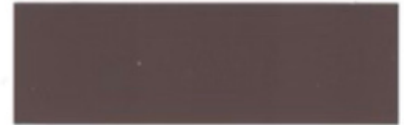
## Aluminum Gutter Material Colors



High Gloss White



Pebblestone



Beaver Brown



Lo Gloss White



Buckskin Brown



Musket Brown WC



Light Pecan



Terratone



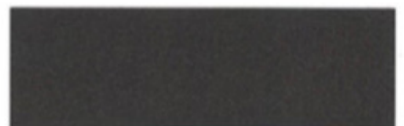
Royal Brown



Heritage Cream



Colonial Gray



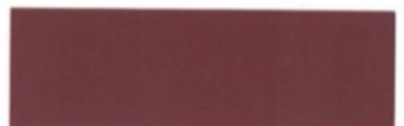
Weathered Bronze



Traditional Cream



Dark Gray



Red



Ivory



Tuxedo Gray



Green



Adobe Tan



Black



Blue

**Service Partners Gutter Supply, LLC** [www.service-partners.com](http://www.service-partners.com)

Phone: 253-845-3167  
926 Valley Ave NW,  
Suite 103  
Puyallup, WA 98371

Phone: 541-688-4279  
1820 Prairie Rd. Unit D  
Eugene, OR 97402

Phone: 360-651-2060  
3800 136th St. NE  
Marysville, WA 98271

Phone: 503-598-7060  
16320 SW 72nd St.  
Tigard, OR 97224

Phone: 360-357-7849  
8609 S. 208th St., Building O  
Kent, WA 98031

*All colors shown here approximate actual finish colors as accurately as possible.*